





Under 11 Rugby v Durham and St Peter's

Under 8 Rugby v St Peter's

Under 11 Rugby v Durham and St Peter's  
Under 8 Rugby v St Peter's

Under 8 Rugby v St Peter's

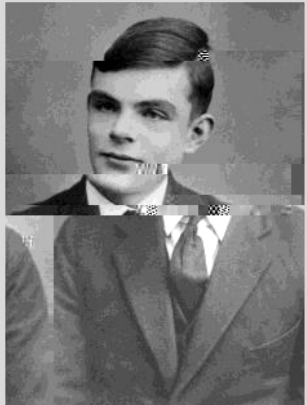
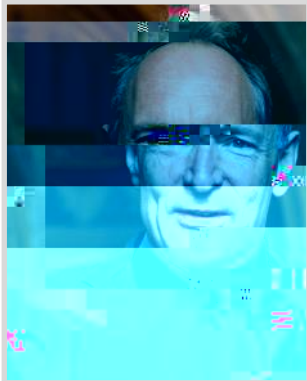
Under 8 Rugby v St Peter's

Under 8 Rugby v St Peter's



# -i Š® i ' -''«®' , «© -±°¥ E'fl¥°«®µ

-i Š® 'aš2j ' -j a°°aj 'j ®© ' ¥Ÿ¥ E'«±°š» «±°š©«±° -j «-j' ¥ œ© -±°¥ E'«¥°«®µ Š-3 j ' 'Š- j ' -j «¥° œ E' -«©j '«©aj 'šj µ¥2j a°« a°°aš° aš2j '®2«'±°¥a ¥j Ÿ°aj '3 šµ3 j '3 «š3 ¥a°j œa «« Eµ ¥ œ±Ÿ¥ E'fl(! ž ša Ÿ' "««j ša "« E'œflj ® š® '«©j '«©aj ¥®°a«±Ea°-«a '3 a« °aj '©«°¥©-«®ša°œ© -±°j ®-œa°¥°-j 2j ®š®



(  $\alpha_j$  "  $j^3$  fl  $\ll \pm j$

ES<sup>a</sup> j<sup>3</sup> °  $\alpha_j$  @<sup>3</sup> Š<sup>-</sup> « © j °  $\alpha_j$  E'  $\alpha^a$   $\mu$  S > « ± °  $\alpha$  S °  $\alpha$  « ± j °  $\alpha_j$  ©  $\alpha$  ± j E<sup>-</sup> j °  $\alpha_j$  Y'  $\alpha$  « °  $\alpha$  °  $\alpha$  (  $\alpha_j$  ° « © « S  $\alpha$  °  $\alpha$  Š S j Y' ±  $\alpha$  Y j @ ©  $\mu$  °  $\alpha$  j ° S<sup>a</sup> Y °  $\alpha_j$  ° «  $\alpha$  j j °  $\alpha$  « j Y S @ ±  $\alpha$  Y °  $\alpha_j$  j © °  $\mu$  Y S  $\alpha$  ° - š o p !  $\mu^a$  j<sup>3</sup> °  $\alpha$  « © j j ± ° E S<sup>2</sup> j ° © j °  $\alpha$  Y ° S<sup>a</sup> Y E S °  $\alpha$  S Y  $\mu$  S<sup>a</sup> j<sup>3</sup> E<sup>3</sup> « ± Y °  $\alpha$  S<sup>2</sup> j °  $\alpha$  ± j °  $\alpha_j$  °  $\alpha$  E ± j Y ° «  $\alpha$  ° j ° S °  $\alpha$  j °  $\alpha$  °  $\alpha$  E °  $\alpha$  ° ©  $\mu^a$  j<sup>3</sup> °  $\alpha$  « « ° E  $\alpha$  S Y ° j E E j Y ° ©  $\mu$  ° « °  $\alpha_j$  @<sup>a</sup> « ° ° © Š S j j ± ° ©  $\alpha$  j ° > ± °  $\alpha_j$  °

---

---

Friday 9th December

---

- Carols on the Gate

Autumn 2022—

- All clubs and activities will be finished by today. There are no clubs and activities running on any day the following week.

Spring 2023

Monday

Summer 2023—

Sprouts Little

DEADLINE TO BRING ITEMS IN IS MONDAY 12TH DECEMBER.

- Reindeer Run for Teesside Hospice.

- 
- 

- PLEASE NOTE: Nursery finishes at 3pm; Pre-Prep at 3.15pm; Prep as usual at 3.45pm. NO AFTER SCHOOL CARE (N.B. Buses will run as usual). \_\_\_\_\_

\_\_\_\_\_

Monday 19th - Wednesday 21st December

- CHRISTMAS HOLIDAY SCHOOL.



# What Parents & Carers Need to Know

Parents and carers are finding it difficult to manage such 'legal but harmful' content. Children are being exposed to content that is not age-appropriate, which can have a negative impact on their mental health and wellbeing. As platforms continue to evolve, sometimes the content that is most harmful to children's wellbeing is the most difficult to manage.

Parents and carers are finding it difficult to manage such 'legal but harmful' content. Children are being exposed to content that is not age-appropriate, which can have a negative impact on their mental health and wellbeing. As platforms continue to evolve, sometimes the content that is most harmful to children's wellbeing is the most difficult to manage.

Parents and carers are finding it difficult to manage such 'legal but harmful' content. Children are being exposed to content that is not age-appropriate, which can have a negative impact on their mental health and wellbeing. As platforms continue to evolve, sometimes the content that is most harmful to children's wellbeing is the most difficult to manage.

Parents and carers are finding it difficult to manage such 'legal but harmful' content. Children are being exposed to content that is not age-appropriate, which can have a negative impact on their mental health and wellbeing. As platforms continue to evolve, sometimes the content that is most harmful to children's wellbeing is the most difficult to manage.

Parents and carers are finding it difficult to manage such 'legal but harmful' content. Children are being exposed to content that is not age-appropriate, which can have a negative impact on their mental health and wellbeing. As platforms continue to evolve, sometimes the content that is most harmful to children's wellbeing is the most difficult to manage.

# Žiμšš°i -

## DECEMBER

Sat 14

Tue 17

Fri 9 Clubs and act vit es f nish for the term today

Mon 12

Tue 13

Wed 18

Thu 19

Wed 14

END OF TERM—3.45pm

No af er school care today

Mon 19

## JANUARY 2023

Thu 5 Pupils return; Spring Term begins

Fri 6

Mon 9

Clubs and Act vit es commence

Tue 10

Fri 13